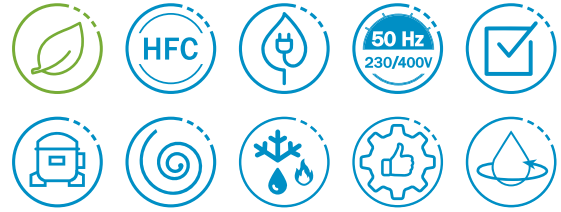




Water-cooled condensing units **HFC**

Water-cooled condensing units



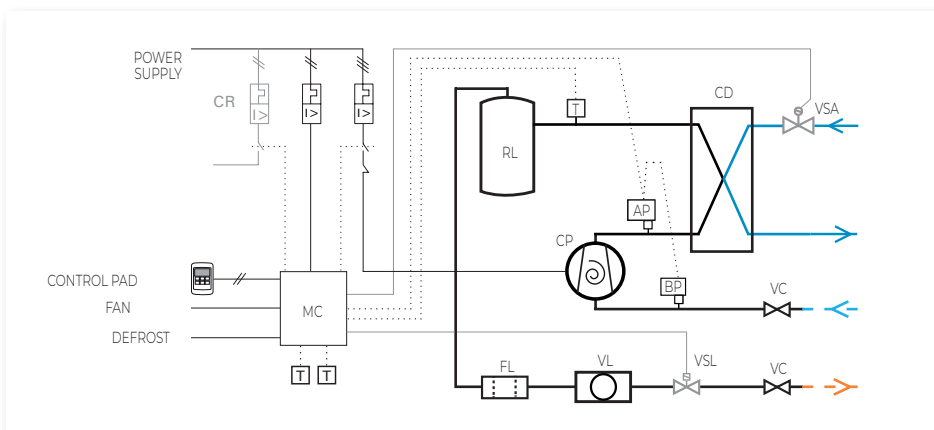
Water-cooled condensing units for positive and negative temperature refrigeration, with very compact size and quiet operation, designed for on-wall or floor installation.

FEATURES

Casing in pre-painted galvanized steel sheet, with noise insulation, with removable front panel for access to the compressor and the electrical panel.	<input checked="" type="checkbox"/>
Acoustically insulated scroll compressor, mounted on shock absorbers.	<input checked="" type="checkbox"/>
Horizontal construction rotary compressor (MDM-P / BDM-P).	<input checked="" type="checkbox"/>
Stainless steel brazed plates heat exchanger. Cooling circuit with ceramic dryer filter, sight glass, high and low pressure switches and services valves.	<input checked="" type="checkbox"/>
Hydraulic condensation circuit made of copper pipe with threaded connections.	<input checked="" type="checkbox"/>
Electromechanic control panel with thermomagnetic protection.	<input checked="" type="checkbox"/>
Liquid injection system for negative temperature models with R-449A.	<input checked="" type="checkbox"/>
Change to 230V 50Hz power supply.	<input type="checkbox"/> + 8 %
Electronic control for evaporator and compressor with temperature probes and control suitable for local or remote control.	<input type="checkbox"/> + 550 €
Refrigerant pre-charge for 5 m piping.	<input type="checkbox"/> + 8 %
Built-in liquid solenoid valve with body and coil.	<input type="checkbox"/> + 183 €
Water solenoid valve.	<input type="checkbox"/> + 183 €
Dynamic balancing valve.	By request
Glycol water condensation.	By request

As standard Optional

REFRIGERATION AND ELECTRICAL SCHEME



Installation example

ON THE FLOOR



ON THE FURNITURE



ANCHORED AT THE WALL



Rotary compressors

Hermetic rotary compressors provide greater reliability, lower noise and maximum design flexibility. Copeland scroll compressors, are characterized by their great robustness and reliability of operation, and being cooled exclusively by the refrigerant gas, allow effective sound proofing.



- AS STANDARD
- AP: HIGH PRESSURE SWITCH
 - BP: LOW PRESSURE SWITCH
 - CD: HEAT EXCHANGER
 - CP: COMPRESSOR
 - FL: FILTER
 - MC: MICRO-CONTROLLER
 - RL: LIQUID VESSEL
 - T: PROBE
 - VC: SHUT-OFF VALVE
 - VL: SIGHT GAUGE
- OPTIONAL
- CR: DEFROST CONTACTOR
 - VSA: WATER SOLENOID VALVE
 - VSL: LIQUID SOLENOID VALVE
- ADDITIONAL WITH ELECTRONIC CONTROL
- MC: ELECTRONIC MICRO-CONTROLLER

230V 50Hz / 400V 3N 50Hz | Positive temperature | Rotary or scroll compressor | R-134a / R-449A

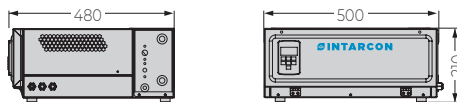
Refrigerant	Compressor	Series / Model	Compressor			Cooling capacity (W) ⁽¹⁾			Input power (W)	Max. current (A)	Condensing flow (l/h)	Hydraulic connection	Pressure drop (kPa) ⁽²⁾	Liq-Gas cooling connection	Weight (kg)	SPL dB(A) ⁽³⁾	Price (€)
			HP	Model	Power supply	0 °C	-5 °C	-10 °C									
						0 °C	-5 °C	-10 °C									
R-134a	1x Rot.	MDM-PY-0005A	3/8	HGA-4450Y	230V	900	730	585	300	4	150	3/4"	5	1/4"-3/8"	20	33	1 731
		MDM-PY-0007A	1/2	HGA-4476Y	230V	1255	1 030	830	500	5	250	3/4"	5	1/4"-1/2"	25	42	2 102
	1x Scroll	MDM-SY-1009A	1 1/4	ZS09	400V 3N *	1 855	1 540	1 270	700	3	350	3/4"	5	1/4"-5/8"	34	37	3 293
		MDM-SY-1015A	2	ZB15	400V 3N *	2 840	2 360	1 945	1 100	5	500	3/4"	5	1/4"-5/8"	43	34	4 150
		MDM-SY-1021A	3	ZB21	400V 3N *	4 250	3 520	2 890	1 500	7	750	3/4"	5	1/4"-3/4"	53	37	4 621
		MDM-SY-1029A	4	ZB29	400V 3N	5 245	4 355	3 585	2 000	10	950	1"	5	3/8"-7/8"	53	37	5 207
		MDM-SY-1038A	5	ZB38	400V 3N	7 095	5 880	4 835	2 500	13	1 250	1"	5	3/8"-7/8"	68	40	5 703
		MDM-SY-1045A	6	ZB45	400V 3N	8 320	6 915	5 695	2 900	13	1 500	1"	5	3/8"-1 1/8"	70	40	6 013
R-449A	1x Rot.	MDM-PG-0006A	1/2	HGA-4467Z	230V	1 285	1 055	855	500	5	200	3/4"	5	1/4"-3/8"	22	35	1 744
		MDM-PG-0010A	1	HGA-4512Z	230V	2 140	1 765	1 440	500	7	350	3/4"	5	1/4"-1/2"	27	38	2 177
	1x Scroll	MDM-SG-1009A	1 1/4	ZS09	400V 3N *	3 095	2 585	2 135	1 100	2	500	1"	5	1/4"-5/8"	34	37	3 549
		MDM-SG-1015A	2	ZB15	400V 3N *	4 860	4 050	3 340	1 800	5	800	1"	5	3/8"-5/8"	43	34	3 952
		MDM-SG-1021A	3	ZB21	400V 3N *	7 365	6 140	5 080	2 500	7	1 200	1"	5	3/8"-3/4"	53	37	4 403
		MDM-SG-1029A	4	ZB29	400V 3N	9 610	8 020	6 635	3 200	10	1 500	1 1/4"	5	3/8"-7/8"	53	37	4 957
		MDM-SG-1038A	5	ZB38	400V 3N	12 445	10 380	8 540	4 100	13	1 950	1 1/4"	5	3/8"-7/8"	68	40	5 430
		MDM-SG-1045A	6	ZB45	400V 3N	14 715	12 270	10 130	4 700	13	2 500	1 1/4"	5	3/8"-1 1/8"	70	40	5 939

230V 50Hz / 400V 3N 50Hz | Negative temperature | Rotary or scroll compressor | R-449A

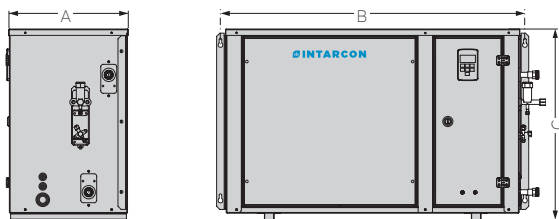
Refrigerant	Compressor	Series / Model	Compressor			Cooling capacity (W) ⁽¹⁾				Input power (W)	Max. current (A)	Condensing flow (l/h)	Hydraulic connection	Pressure drop (kPa) ⁽²⁾	Liq-Gas cooling connection	Weight (kg)	SPL dB(A) ⁽³⁾	Price (€)
			HP	Model	Power supply	-20 °C	-25 °C	-30 °C	-35 °C									
						-20 °C	-25 °C	-30 °C	-35 °C									
R-449A	1x	BDM-PG-0004A	1	HGA-2446Z	230V	985	785	615	470	600	5	150	3/4"	5	1/4"-1/2"	23	42	2 591
		BDM-SG-1006A	2	ZF06	400V 3N	2 360	1 910	1 525	1 195	1 500	5	550	3/4"	5	1/4"-5/8"	45	36	5 160
	1x Scroll	BDM-SG-1 009A	3	ZF09	400V 3N	3 210	2 590	2 070	1 620	1 900	6	700	3/4"	5	3/8"-3/4"	54	41	5 907
		BDM-SG-1011A	3 1/2	ZF11	400V 3N	4 050	3 275	2 610	2 045	2 300	8	850	3/4"	5	3/8"-3/4"	55	44	6 151
		BDM-SG-2013A	4	ZF13	400V 3N	4 595	3 715	2 970	2 325	2 500	9	950	1"	5	3/8"-7/8"	55	44	6 367
		BDM-SG-2015A	5	ZF15	400V 3N	5 640	4 560	3 640	2 850	3 300	10	1 200	1"	5	3/8"-7/8"	73	44	6 979
		BDM-SG-2018A	6	ZF18	400V 3N	6 685	5 400	4 310	3 375	3 900	14	1 500	1"	5	3/8"-1 1/8"	78	46	7 703
		BDM-SG-2025A	8	ZF25	400V 3N	8 400	6 795	5 430	4 265	4 200	16	1 750	1 1/4"	5	3/8"-1 1/8"	78	49	9 192

DIMENSIONS

0 series



1 and 2 series



Dimensions in mm.

Dimensions (mm)	A	B	C
1 series	355	832	531
2 series	375	957	600

⁽¹⁾ Cooling capacity at nominal performances refer to operation at evaporation temperature -10 °C (PT) and -30 °C (NT), water temperature of 40 °C, 10 K super-heating and 3 K sub-cooling.

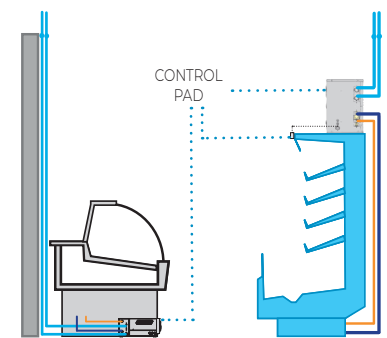
⁽²⁾ Condenser pressure drop in water circuit.

⁽³⁾ Condenser sound pressure level, with directivity 1, measured at 10 m from the unit (non-binding value calculated from sound power).

* Available units with 230V 50Hz power supply.

Installation scheme

Waterloop series motor condensers can be installed on the furniture, on the floor or anchored at the wall.



CLIENT360
client360.intarcon.com
REFRIGERATION CALCULATION SOFTWARE