


ki Type of keyboard and number of devices

keyboard 2:	1 or 2 devices
keyboard 8:	3 - 8 devices
keyboard 32:	9 - 32 devices
keyboard 128:	33 - 128 devices
keyboard 256:	129 - 256 devices



keyboard OEM:	Manufacturer-oriented (Integrated in the equipment to be controlled).
keyboard STANDARD:	Designed for the installer.

ki Accesories

	Router 3G + antenna		kiconex wire: 100m (2x1mm shielded)
	Router WiFi + antenna		Data acquisition module (probes, digital inputs, transducers, etc.)
	Electrical Panels		

ki There are three levels of the kiconex platform

Depending on the attributes / services that are requested:

	BASIC	PROFESSIONAL	PREMIUM
Data History	3 months	1 year	3 years
Installations configuration	✗	✗	✗
Online update	✗	✗	✗
Alarm display	✗	✗	✗
Alarm management	-	✗	✗
No. of users	1	3	5
Development libraries	-	1	5
Diagrams Design (Layouts)	-	Cmm (1 lay's)	Cmm (5 lay's)
Graphics Design	-	Cmm (5 var.)	Cmm (15 var.)
Installation optimization report	-	-	✗
Big Data Analysis	-	-	✗
Smart Programming	-	-	✗

Cmm = Commissioning

We analyze
data because
everything that
can be measured,
can be improved

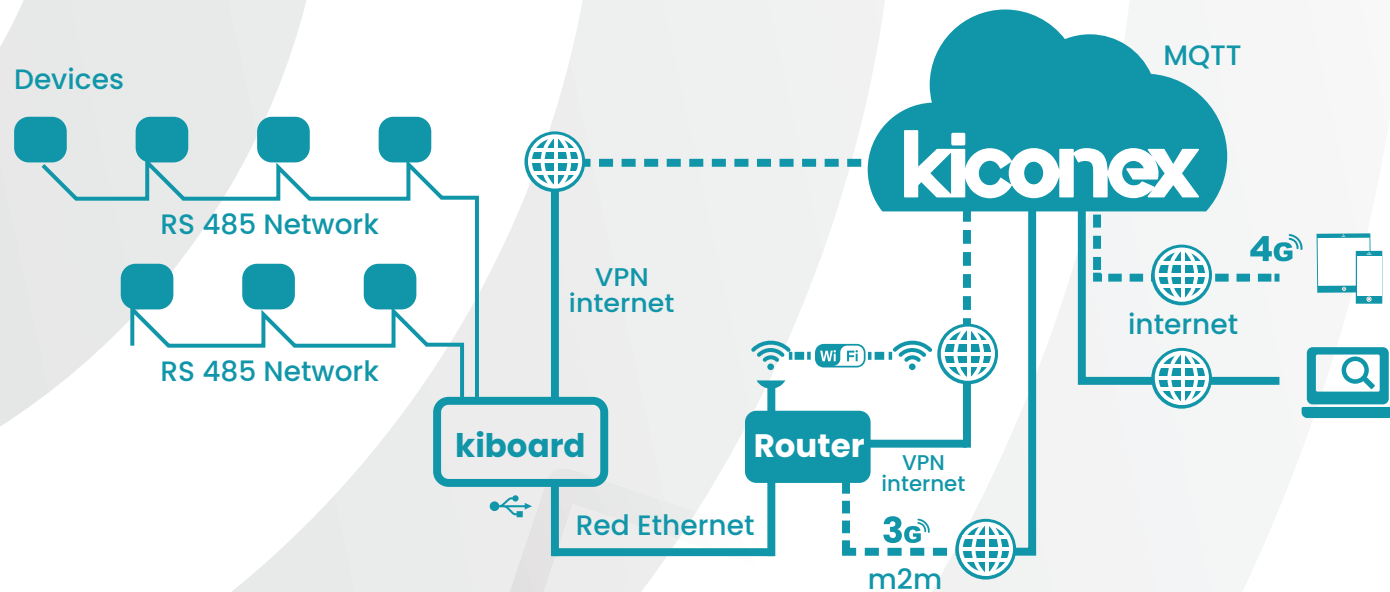


Advanced Connectivity
Solutions for Smart
Installations (IoT)



ki WHAT IS kiconex?

A system of monitoring and remote control for (one or various units) air conditioning and industrial refrigeration installations, storing all data in the cloud.



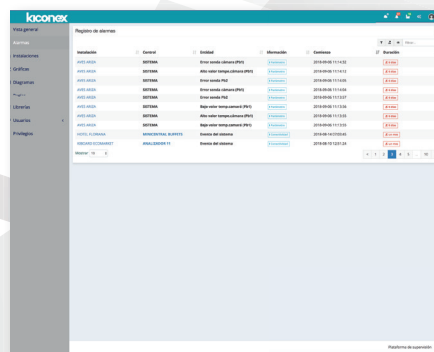
kiboard: Module for real time monitoring and cloud storage.

kiconex: Web interface and cloud storage.

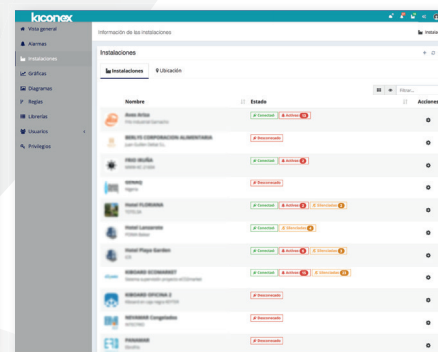
ki kiconex



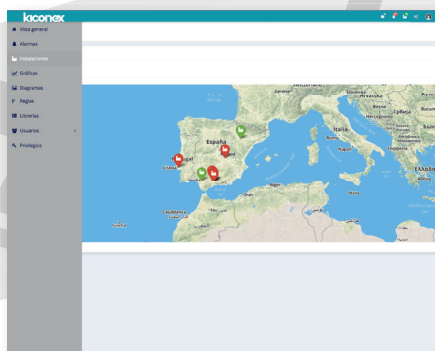
Login page (login).



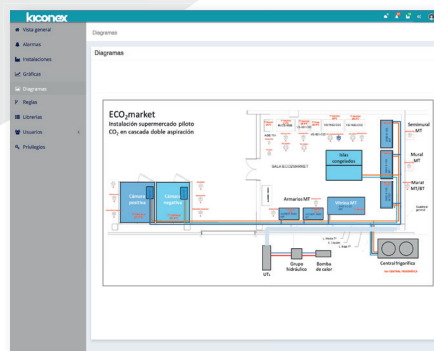
Alarm management.



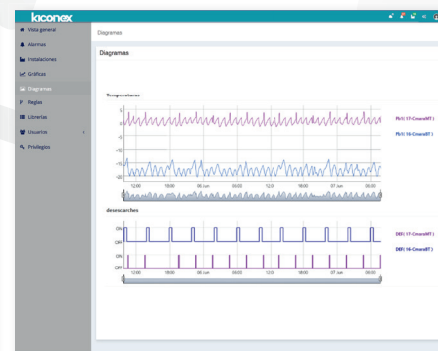
Summary of installation status.



Geolocation.



Installation layout.



Graphics representation.

ki FEATURES

- kiconex reads data in **real time**, with a maximum frequency of every 5 seconds.
- You can work with two **different** data transmission **speeds** simultaneously.
- You can work at the same time with two different **communication protocols**.
- **Integrate** electronic devices from different manufacturers, in the same installation.
- **Installation layout** showing parameter values in real time.
- **Parameter graphs** in real time generated, create comparative studies.
- **Exports data** to different file formats (.xls, .pdf, etc.)
- **Plug & Play** installation. No license or installation software needed.
- **Interface:** Different devices (computer, tablet, smartphone, etc.)
- **Multi-user** (several users can be connected at the same time).

ki BENEFITS

- Total supervision of the installation**
 - Cost savings (installer)
 - Improved energy efficiency (owner)
 - Continuous learning and improvement (equipment manufacturer)
- Management of hierarchical alarms**
 - Efficient service (installer)
 - Information and control (owner)
 - Proactivity for installer-client (equipment manufacturer)
- One platform for monitoring + control**
 - Unified control (installer)
 - Ease of management (owner)
 - Complete information from one source (equipment manufacturer)

ki TECHNICAL CHARACTERISTICS

