

R-290 water-cooled condensing units



Water-cooled condensing units for positive and negative temperature refrigeration with very compact size and quiet operation, designed for on-wall or on refrigerated service.

WHAT'S NEW

Removable front register

Front access panel for access to the main components of the unit: compressor, boiler, valves and starter kit.



Independent access to the electrical panel

Electrical panel with front access. All the protection and electronic control elements are integrated. Connection terminal block.

Installation example

INSTALLED ON THE FURNITURE



ANCHORED AT THE WALL



Electronic control (optional)

DM-ND/SD units can feature XM670K electronic control.



- ▶ Remote control keyboard with digital display.
- ▶ Internal clock for programming energy saving cycles and defrosting.
- ▶ Possibility of interconnection and synchronization of up to 8 devices by LAN, managed from a single control.

DM-ND/SD

Connections on the right outside

Welded connections for liquid line, suction and defrost (optional). Threaded connections for hydraulic circuit. Safety valve line.



CLIENT360
client360.intarcon.com
REFRIGERATION CALCULATION SOFTWARE



FEATURES

Unit supplied without refrigerant charge.	■
Acoustically insulated scroll compressor, mounted on shock absorbers.	■
Casing in pre-painted galvanized steel sheet, with noise insulation, with removable front panel for access to the compressor and the electrical panel.	■
Stainless steel brazed plates heat exchanger. Cooling circuit with liquid receiver, filter, sight glass, high and low pressure switches, and valves to be welded. Safety valve led to the outside.	■
Hydraulic condensation circuit made of copper pipe with threaded connections.	■
Electromechanic control panel with thermomagnetic protection.	■
Hot gas defrosting.	□ + 450 €
Electrical defrosting.	□ + 0 €
Condensation water temperature 5 °C / -10 °C.	□ + 775 €
Built-in water solenoid valve.	□ + 183 €
Built-in liquid solenoid valve with body and coil.	□ + 183 €
Built-in thermostatic expansion valve.	□ + 100 €
Crankcase heater.	□ + 77 €
Low voltage protection (single-phase models).	□ + 189 €
Low voltage and phase sequence protection (three-phase models).	□ + 251 €

■ As standard □ Optional

230V 50Hz / 400V 3N 50Hz | Positive temperature | Hermetic or scroll compressor | R-290

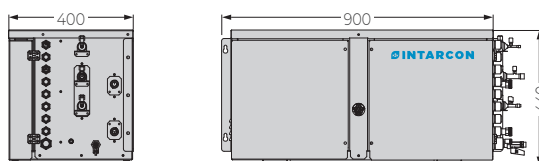
Refrigerant	Compressor	Series / Model	Compressor		Cooling capacity (W) ⁽¹⁾ Evaporation temperature			Input power (W)	Max. current (A)	Conden. air flow (litre/hour)	Liq-Gas cooling connection	Hydraulic connection	Pressure drop (kPa) ⁽²⁾	Refrig. charge (g) ⁽³⁾	Weight (kg)	SPL dB(A) ⁽⁴⁾	Price (€)
			HP	Power supply	0 °C	-5 °C	-10 °C										
R-290	Hermetic	MDM-ND-0006A	1/4	230V	583	482	399	250	5.2	115	3/16" - 3/8"	1/2"	2.1	< 500	66	21	1 973
		MDM-ND-0008A	1/3	230V	799	674	575	304	5.8	155	3/16" - 3/8"	1/2"	2.7	< 500	66	25	2 007
		MDM-ND-0015A	1/2	230V	1 262	1 050	907	496	6.0	240	1/4" - 1/2"	3/4"	2.7	< 500	72	20	2 233
		MDM-ND-0018A	3/4	230V	1 582	1 326	1 126	624	6.6	300	1/4" - 1/2"	3/4"	3.4	< 500	73	20	2 533
	Scroll	MDM-ND-0034A	1	230V	2 985	2 404	1 962	1 273	12.9	555	1/4" - 5/8"	3/4"	3.1	< 500	80	36	2 918
		MDM-SD-1012A	2	400V	3 906	3 266	2 729	1 347	6.4	700	3/8" - 7/8"	3/4"	8.1	< 500	91	38	4 800
		MDM-SD-1017A	2 1/2	400V	5 366	4 483	3 805	1 798	7.4	960	3/8" - 7/8"	1"	5.9	< 500	94	38	5 010

230V 50Hz / 400V 3N 50Hz | Negative temperature | Hermetic or scroll compressor | R-290

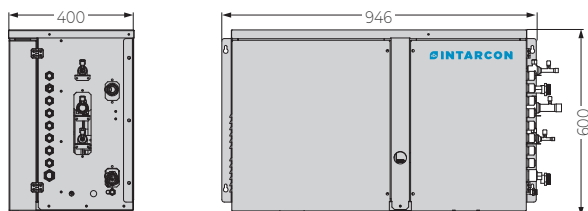
Refrigerant	Compressor	Serie / Modelo	Compressor		Cooling capacity (W) ⁽¹⁾ Evaporation temperature				Input power (W)	Max. current (A)	Conden. air flow (litre/hour)	Liq-Gas cooling connection	Hydraulic connection	Pressure drop (kPa) ⁽²⁾	Refrig. charge (g) ⁽³⁾	Weight (kg)	SPL dB(A) ⁽⁴⁾	Price (€)
			HP	Power supply	-20 °C	-25 °C	-30 °C	-35 °C										
R-290	Herm.	BDM-ND-0020A	3/4	230V	722	590	492	379	464	7.1	165	3/16" - 1/2"	1/2"	3.6	< 500	70	21	2 172
		BDM-ND-0034A	3/4	230V	1 360	1 078	853	576	843	10.5	295	1/4" - 5/8"	3/4"	1.3	< 500	78	28	2 641
	Scroll	BDM-SD-1017A	2 1/2	400V	2 398	1 912	1 554	1 177	1 515	7.4	525	1/4" - 7/8"	3/4"	6.5	< 500	94	38	4 902
		BDM-SD-1025A	4	400V	3 513	2 786	2 222	1 600	2 360	9.4	785	3/8" - 7/8"	3/4"	6.4	< 500	106	42	6 148
		BDM-SD-1037A	6	400V	5 033	3 988	3 182	2 313	3 498	12.0	1 145	3/8" - 1 1/8"	1"	8.0	< 500	108	44	6 647

DIMENSIONS

0 series



1 series



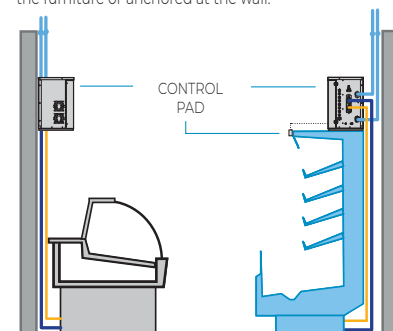
Dimensions in mm.

Accessories DM-ND/SD units

- ▶ Water solenoid valve supplied separately (+ 183 €).
- ▶ Balance and control valve supplied separately (by demand).
- ▶ Door micro-switch (+ 65 €).
- ▶ Cold room LED light (+ 40 €).

Installation scheme

Waterloop series motor condensers can be installed on the furniture or anchored at the wall.



⁽¹⁾ Cooling capacity at nominal performances refer to operation at evaporation temperature -10 °C (PT) and -30 °C (NT), water temperature of 40 °C, super-heating 6 K and 5 K sub-cooling.

⁽²⁾ Condenser pressure drop in the water circuit.

⁽³⁾ A3 refrigerant charge less than 0.5 kg, units exempt from the International Electrotechnical Committee (IEC 60335).

⁽⁴⁾ Condenser sound pressure level, with directivity 1, measured at 10 m from the unit (non-binding value calculated from sound power).