



kiconex

2022 CATALOGUE

Device Monitoring/Supervision
and Control
Advanced Connectivity Solutions
for Smart Installations (IoT)
Industry 4.0

*We analyse
data, because
anything
that can be
measured
can be
improved*

CONTENTS

- 3 -

ENVIRONMENT

The Internet of Things (IoT)

- 4 -

ABOUT US

kiconex team
kiconex in the HVAC+R sector
Offices

- 6 -

kiconex

kiconex technology
R&D&i

- 11 -

CUSTOMERS

Manufacturers (OEMs)
Installation Companies / Distributors
Opinion Leaders / Property

- 14 -

SERVICES

Technical Support
Online training
Plug & Play

- 17 -

MAIN SOLUTIONS

Hotels
Supermarkets
Food industry

- 25 -

PRODUCTS

Hardware
Accessories
Software

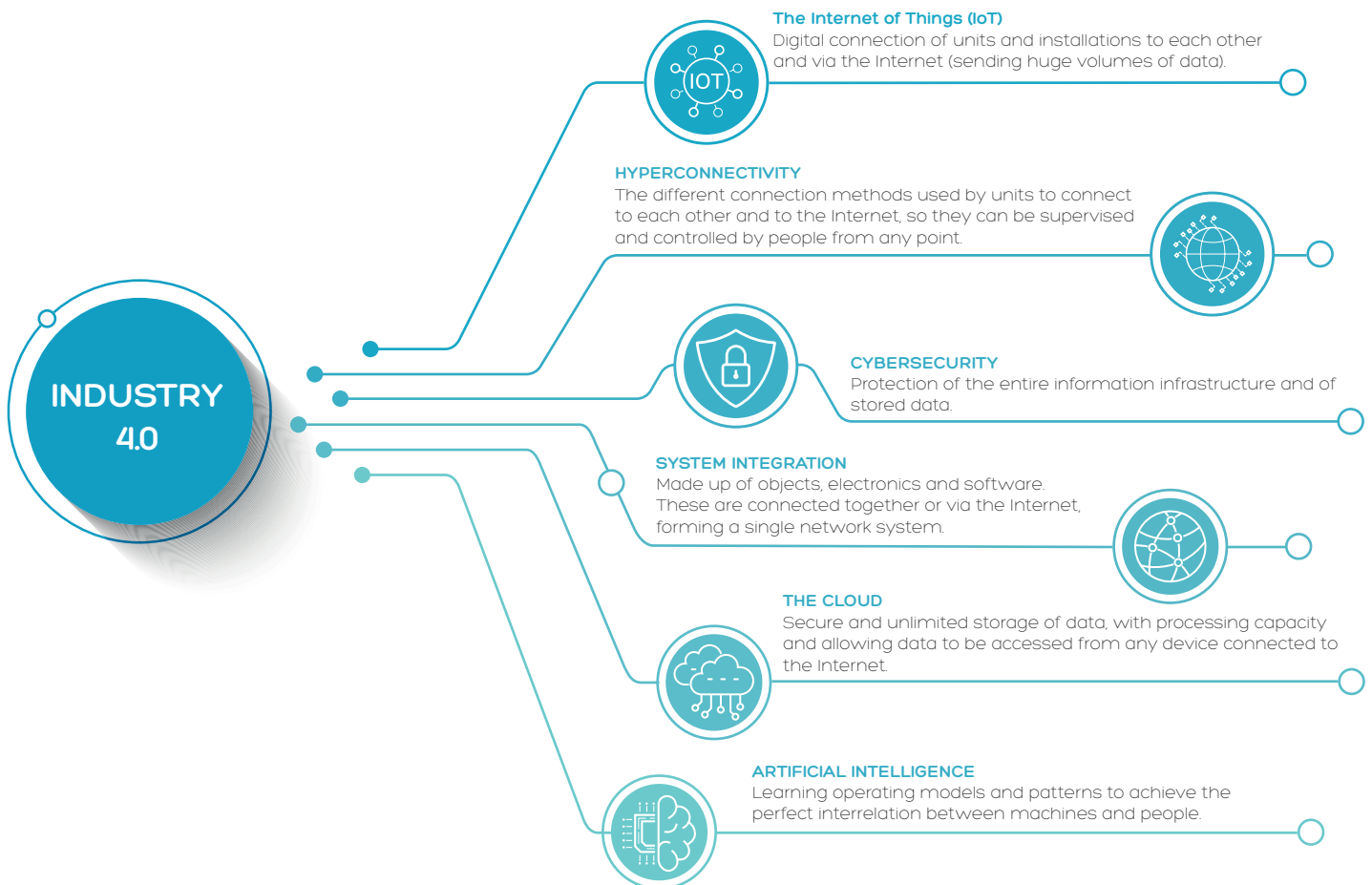
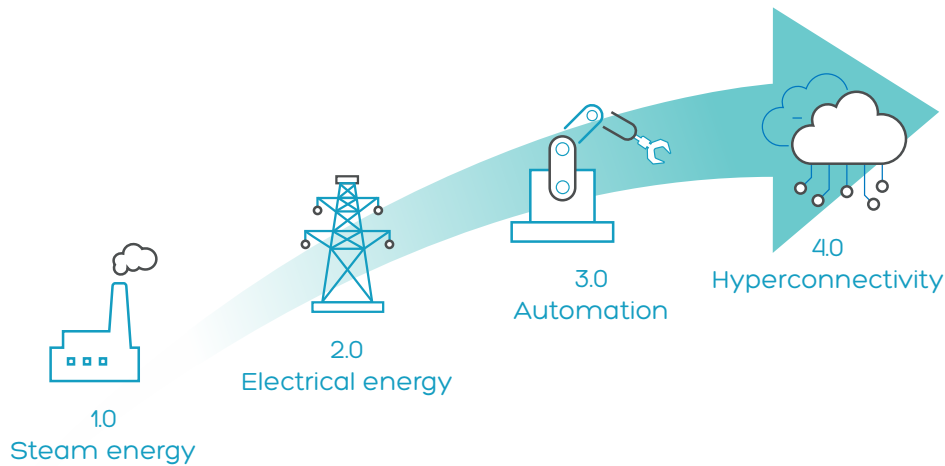
- 36 -

PLATFORM

ENVIRONMENT - The Internet of Things

Industry 4.0 is also regarded as the 4th Industrial Revolution. The first Industrial Revolution (1784) was brought about by the steam engine; the discovery of electricity led to the second Industrial Revolution (1870); the third Industrial Revolution

(1969) arrived with computing and PLCs, and the fourth Industrial Revolution (2010) is the one associated with Connectivity.



TEAM

kiconex is made up of a group of young cross-disciplinary engineers with extensive experience both in the IoT and in the air-conditioning and refrigeration product and service sector, in its areas of manufacturing, distribution and installation, with a track record of over 35 years. Our experts specialise in industrial refrigeration and air-conditioning, electronics, IT and communications.

kiconex focuses on the research, development, manufacturing and sale of its innovative products and services, which are designed with Industry 4.0 technologies for the remote supervision and control of air-conditioning and industrial refrigeration installations and equipment as their top priority, while also supervising and controlling all other mechanical and electrical installations in a building, always with a focus on maximising energy efficiency and creating a more sustainable environment.



CONTACT US

National offices

Balearic Islands
Canary Islands
Centre
East
North-east
North-west
North
West
South-east
South-west



sales@kiconex.com

International offices

Europe

Germany
Belgium
France
Italy
Malta
The Netherlands
Portugal
United Kingdom
Switzerland
Turkey

Asia

India

America

Argentina
Bolívia
Colombia
Chile
Ecuador
Mexico
Panama
Paraguay
Peru
Dominican Rep.
Uruguay
Venezuela
Canada

Africa

Equatorial Africa
Angola
Algeria
Capé Verde
Ivory Coast
Morocco
Mozambique
Tunisia

Middle East

Pakistan

HVAC & R SECTOR

kiconex was established by a well-known benchmark **Spanish business group**, a leading industrial refrigeration and air-conditioning manufacturer, with the aim of monitoring and controlling the units it makes before they are marketed, so as to supervise their operation in different installations and under different conditions. These solutions allow all of the information associated with the operation of its units to be gathered under real conditions and in different scenarios. In addition, our after-sales department offers a top-notch assistance service to installation and maintenance companies, in line with the company's commitment to excellence.

As a result of its success, kiconex became one of the corporation's business lines after being incorporated as a group company. After joining the group, kiconex penetrated the industrial refrigeration and air-conditioning sector at great speed, with regards to the establishment of relationships and its business with installation companies, engineering firms and different properties, with all of them highlighting kiconex's strategic role in the supervision and control of their units and installations.

kiconex develops and manufactures a state-of-the-art HVAC + R unit and installation supervision and control system, based on the IoT (Internet of Things) and Industry 4.0.



SUPERVISION/MONITORING

kiconex focuses on the interconnectivity (a crucial variable of the IoT) of industrial refrigeration and air-conditioning units to supervise the operation, consumption and performance, alarms, etc. of these units in an easy and intuitive way, at any time and from any place. All of this occurs in real time.



CONTROL

kiconex is more than just an industrial refrigeration and air-conditioning installation and unit monitoring and supervision system. kiconex can be used to manage (control) any installation from any point, with a process that is identical to that carried out on-site. The system can perform the following actions on any unit in an installation: change the setpoints, start, end, extend, shorten and program the demisting cycles, send the order to start or shut down the unit, change the cycles (cold/heat), lock the thermostat keypads, etc.



FULL INTEGRATION

kiconex can integrate any unit with communication features without the need to use gateways, and is also capable of taking readings from the different field elements of an installation (probes, transducers, etc.) and performing actions according to the values obtained by each element.



PLUG & PLAY

kiconex is a fully Plug & Play system to ensure that it is easy to handle, since it is configured at the factory and updated online.



READY TO COMPLY WITH THE REGULATIONS

The Regulations on Building Heating Installations (RITE), through Royal Decree 178/2021, which modifies R.D. 1027/2007, which entered into force on 1 July 2021, gives the Thermal Installation category to the company's automation and control systems.

*The IoT in the
field of unit
and installation
monitoring
and control*

KICONEX TECHNOLOGY

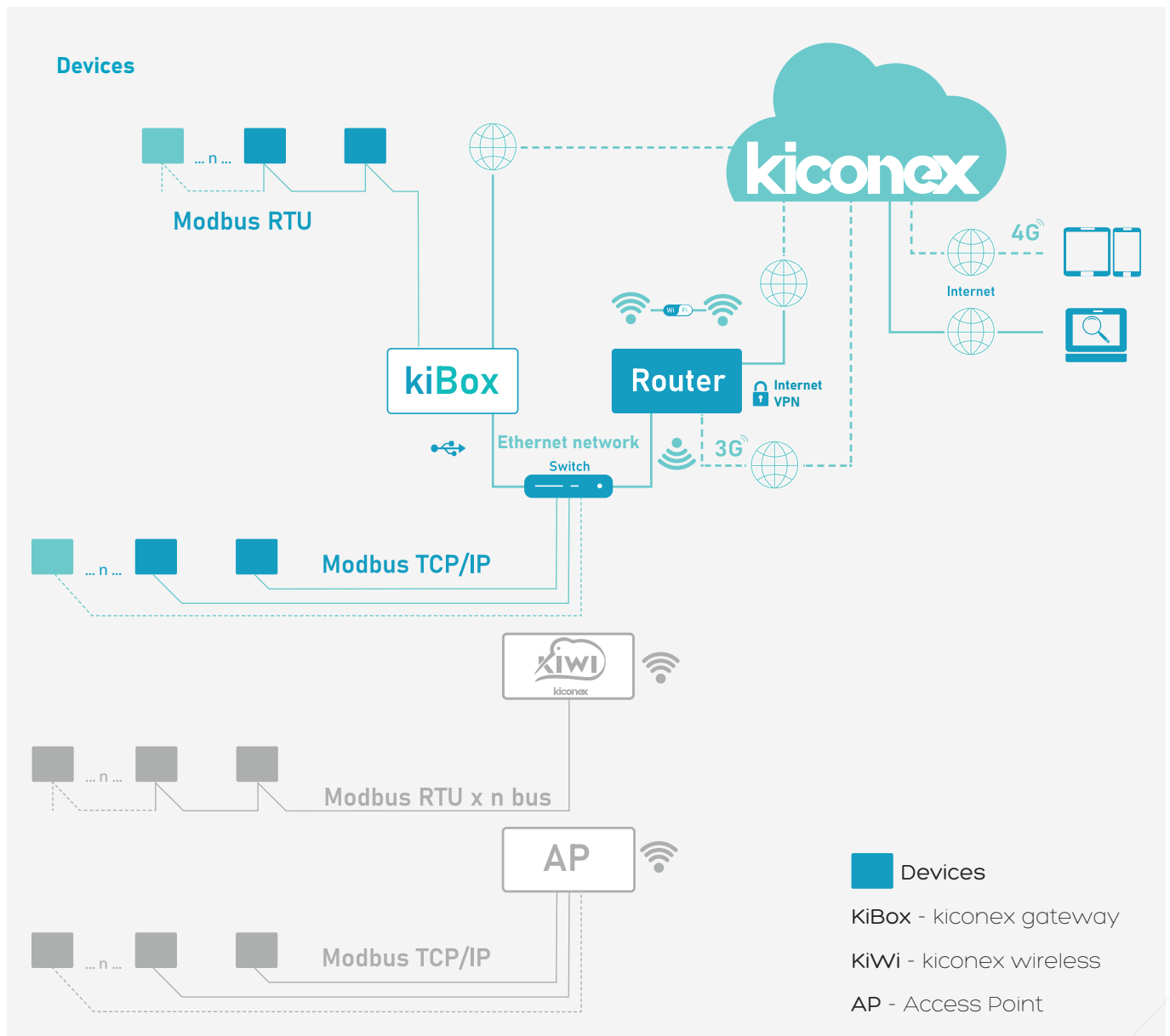
kiconex was created as an industrial (and commercial) refrigeration and air-conditioning unit and installation supervision (monitoring) and control system, which stores all data in the cloud.

Right now, we could say that **kiconex** is a general-purpose supervision and control system used within the scope of Industry 4.0.

The supervision system can gather enough data to analyse the behaviour of the units and installations and analyse their operation.

Using the control features, it is possible to interact with units as follows: changing the operating modes (cold/heat, start/stop, demist, etc.) or setpoints of the different variables of each unit.

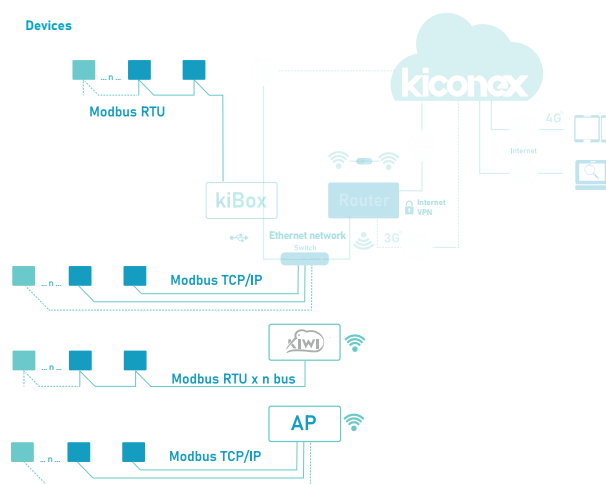
Currently, kiconex is a general-purpose supervision and control system that can interact with many different types of units and installations: electrical installations, photovoltaic installations, lamps, weather stations, shading devices, irrigation systems, etc.



Location of each element and use of control and supervision processes:

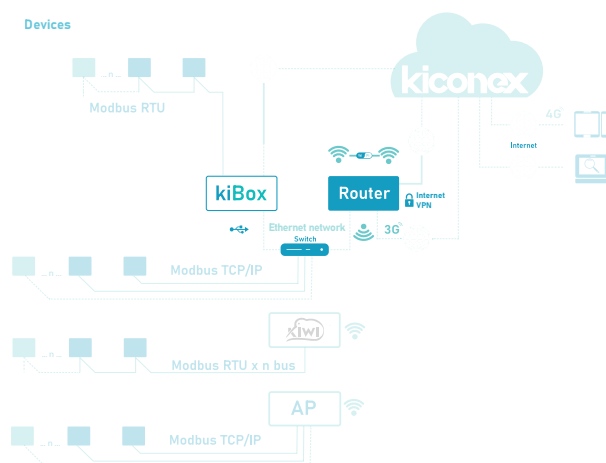
Elements to monitor and control:

display cabinets, wall-mounted cabinets, furniture, refrigeration chambers, islands, production systems, chillers, AHUs, etc.



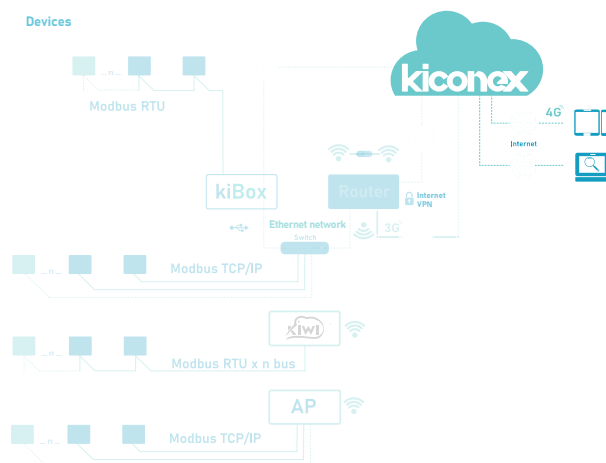
Kibox gathers the data of different units in the installation via Wi-Fi, 3G/4G or a simple Ethernet network, via a router, which is then sent to the cloud via a secure VPN network. Kibox:

- 0, 1, 2, 4, 8 RS485 ports.
- An Ethernet port to connect the router.
- A USB port to connect the router (Wi-Fi or 3G/4G).



Platform (mykiconex)

Part of the system that helps display the data gathered from the different units in an installation, using different interfaces: desktop or laptop computer, smartphone or tablet.



R&D&i

kiconex is constantly innovating. We invest most of our resources in innovation.

Since our establishment, our aim has been to develop the best technology solutions to offer cutting-edge products to our customers at competitive prices.

Generally speaking, kiconex concentrates its efforts in the fields of Big Data, Machine Learning and Digital Twins, and is starting to make great progress in the area of Edge Computing.

The company's efforts in these areas are divided into two clearly different fields:

Hardware

Compact, reliable and easy to use and install.

Specific gateways for OEMs, to ensure their own connection to the different versions and adapted to the customer's needs.

We have also developed leading solutions and enhanced our products for installation companies. Some of the improvements include new versions of our kibox2 and kibox4 gateways and we also have new developments, such as our Wireless product: KiWi (kiconex Wireless).

Software (platform)

A versatile solution that offers the most suitable supervision and control tools.

ADVANTAGES

Plug & Play system.

- No need to open the communication port.
- No additional software required.
- No licenses or fees.

Real-time monitoring.

- Parameter charts.
- Installation diagrams (layouts).

Configuration of units.

- Definition of the variables that will be visible.
- Definition of the reading times.
- Definition of the permissions.

Start-up/Shutdown of units.

- Sends the command to start or shut down individual units or groups of units.
- Enables the operating modes, demisting cycles, etc.

Writing parameters.

- Changes to setpoints, timers, etc.
- These changes can only be implemented by users with the corresponding authorisations.

Display and management of alarms in hierarchies.

- Classification of alarms according to their criticality and the option to inform specific installation users about each type of alarm via email and/or SMS.

Smart programming.

- Implements conditions in a unit or installation so that, depending on these conditions, it operates according to your requirements.
- Time programming (daily, weekly, etc.).
- Functional programming: "if (...), then (...)".

Data log.

- Storage of the values of all parameters measured in the cloud.

Full integration.

- Easy integration of different types of electronics or regulation of each unit and element in an installation.





kiconex offers a
swift, effective and
exclusive service
to its customers

CUSTOMERS

We offer a wide range of products and services that can cater to the needs of all market actors. Moreover, kiconex's range has been designed with the specific needs of each customer in mind.



MANUFACTURERS (OEMs)

For manufacturers, we offer compact hardware solutions with connectivity features, occupying as little space as possible on the electrical panels of the units being supervised.

With regards to our **mykiconex** platform, we also offer OEM customers an AD-HOC solution that meets their needs and allows them to offer a series of innovative services to their customers, in relation to the maintenance and monitoring of the operation of their units. All in all, kiconex offers an ultra-modern after-sales service, in line with the latest technologies that are currently available to everyone and that we provide for our customers.

Therefore, kiconex encourages all OEM customers to have a Key User, i.e., a person who can be trained as an expert and who can convey the correct message and the technical and commercial information within their structure to optimise kiconex's performance at all times.

Kicore

This platform has been exclusively designed for t, allowing them to gather and manage the information of all kibox units acquired, as well as to manage the M2M cards acquired through our platform, with the data plans we offer.

Branding

All of our OEM customers can opt to fully personalise our mykiconex platform with their brand image, corporate colours, etc.



INSTALLATION / MAINTENANCE COMPANY

These customers are responsible for installing and commissioning our systems. We always try to offer a full range of hardware and software solutions (mykiconex platform), so these companies can offer a solution adapted to their customers' needs (end customers/property).

At the hardware level, we have upgraded our kibox2 and kibox4 solutions with usability improvements and by making them more compact. We have also developed kiconex wireless (KiWi), thus reducing the need to lay down cables, since it offers communications via Wi-Fi.

In addition, at the software level, our mykiconex platform is constantly being upgraded; many of these upgrades are requested by our installation company customers.

Finally, we offer BASIC, PROFESSIONAL and PREMIUM plans to cater to the needs of all market players.



OPINION LEADERS / PROPERTY

We have a two-fold role with opinion leaders and end customers (property): first, to let all customers know about kiconex's features and how we can help them design their installation with today's cutting-edge technology and, second, to offer a tool to customers that allows them to control all installations, even if they are in different regions.

Both types of customers will find kiconex to be a unique solution that can bring together the different installations of each establishment.



DISTRIBUTORS

kiconex allows distributors to offer a general-purpose supervision and control system to its customers, which can integrate all of the devices they market with communication features.

Therefore, distributors can offer a monitoring system to their customers that can integrate the following in a single screen: air-conditioning equipment, air source heat pumps, boilers, ventilation equipment, circulation pumps, etc.



CONTROL PANEL DESIGNERS/ INTEGRATORS

These types of customers are midway between OEM manufacturers and Installation/Maintenance companies. kiconex offers these customers the option of controlling their developments remotely, and also of providing remote support to their customers. To achieve this, we offer the VPN service to these customers. Many installations have a high decision-making capacity and both integrators and control panel designers are keen to use these types of solutions.

KICONEX SERVICES



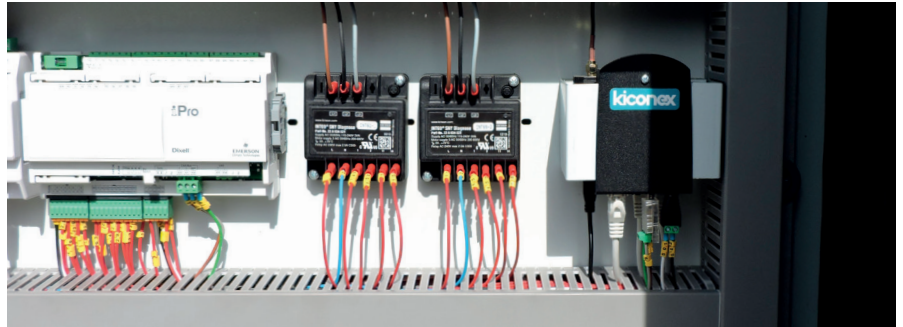
Pre and after-sales technical support

Pre-sales

Technical advice for customers, regarding the installation of our solutions, important things that must be taken into account, resolving any queries that the customer may have when designing the installation. Likewise, the unit routing is defined, as well as their distribution via the corresponding kibox bus. In this regard, the corresponding libraries will be assigned to each device in the installation to make kiconex as "Plug & Play" as possible.

After-sales

Coverage at different levels: answers to even the simplest of queries during commissioning, resolving Internet connectivity problems or issues associated with the connection to the bus, creation of charts and diagrams, configuration of alarms, etc.



Plug & Play configuration

Exclusive service

kiconex aims to become the only tool that puts the product in the hands of the installation company, only requiring connection to the corresponding gateway in order to view the installation instantly.

kiconex will perform the following tasks, thanks to the information provided by our customers:

- I. Assign a geographical location.
- II. Create users.
- III. Assign a logical direction to each device.
- IV. Associate each device with its corresponding library.
- V. Configure the simple or main view to monitor the parameters/variables of each device.
- VI. Configure alarms.
- VII. Design charts and/or diagrams.
- VIII. Design the layout corresponding to the installation or unit.

IX. Establish the necessary rules (programs).

In addition, kiconex does not require communication ports to be opened. Simply power the corresponding kibox (gateway) and connect it to the Internet to monitor all of the installation's devices.



Online training

kiconex offers installation companies an exclusive training space where they will learn how to handle and use our mykiconex platform.

Two or three 30-minute training sessions for a maximum of 4 people are given, to ensure that each person makes the most out of each session to become an expert user, capable of handling all of the features of mykiconex.

This service allows us to have a close relationship with the customer and learn first-hand about their experience of using the platform, as well as their proposals to improve the platform in terms of usability.



support@kiconex.com



+34 617 20 22 73



kiconex

Kiconex Refrigeration Industry 40

@kiconexIoT

*The most
advanced
IoT platform
for the most
demanding
market
sectors*



MAIN SOLUTIONS

kiconex is showcased as a state-of-the-art technological solution to monitor and control installations.

Below are some of the main solutions in which kiconex has managed to control and supervise installations with varying levels of complexity.

Cases in different strategic sectors:

- **Hotels:** DHW production and air-conditioning.
- **Supermarkets:** refrigeration for low, medium and high-temperature services.
- **Food industry:** refrigeration for different industry uses, from production to preparation, packaging, preservation and final storage.

HOTELS

In these installations, **kiconex** can control the hotel's air-conditioning and DHW systems from a single place, in addition to connecting each unit to an IoT platform, fulfilling a **two-fold function**:

It allows the hotel's units and devices to be connected to the cloud via a **kibox**. This allows data to be gathered in order to **supervise** the operation of these units and devices remotely, providing a data log from which conclusions can be drawn and potential faults can be detected.



Moreover, **kiconex's kicontrol** offers a tailored programmed control solution to manage all DHW and air-conditioning instruments within the hotel. This control solution is also connected to **kibox** to send **data to the cloud** and **control** the installations through the IoT platform.

List of units to supervise

2 Air-water heat pumps with recovery system.

1 Heat pump (gas motor).

2 Boilers.

4 Tanks.

4 Autonomous air-air units.

PLATFORM

Basic layout

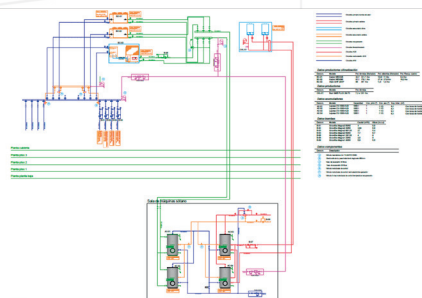
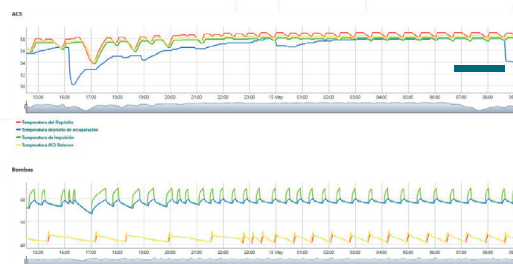
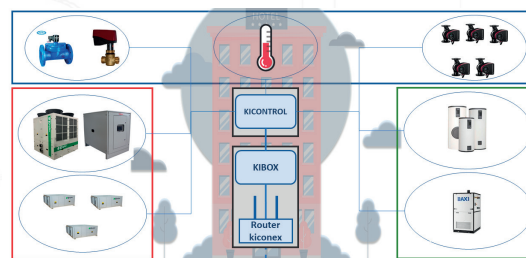


Chart results



Synoptic chart



List of components

- 1 Unit. kiconex 32 PREMIUM.
- 1 Unit. 350 x 300 mm electrical panel.
- 1 Unit. kicontrol 215.
- 1 Unit. SMART programming.
- 5 Units kiconex cable.

SUPERMARKETS

In these installations, **kiconex** connects all of the chambers, furniture and refrigeration systems to a **kibox**, through which it constantly gathers the data sent to **kiconex's IoT platform**. With this platform, the supermarket owner can **supervise** the operation of their units, turn them on and off, and see how they are operating over a period of time.



Moreover, the maintenance staff can perform these **supervision** tasks to detect faults and will only have to visit the supermarket when a **specific fault alert** is sent via email.

UNITS TO SUPERVISE

1 Compact cooling station with three compressors for medium-temperature cooling applications. It features a DIGITAL progressive cooling capacity adjustment system for the compressor.

1 Small cooling chamber with a ceiling-mounted single-block compact unit.

1 Freezer chamber with an evaporator unit, featuring regulation valves and pre-wired electronic control system.

4 Enclosed wall-mounted refrigerators.

1 Open wall-mounted refrigerators, with electronic control system.

1 Autonomous wall-mounted freezer, with electronic control system.

PLATFORM

Basic layout

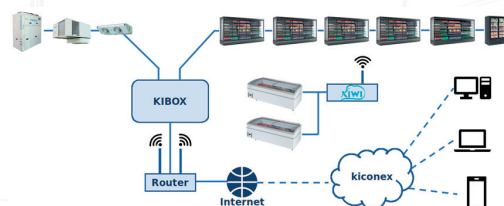
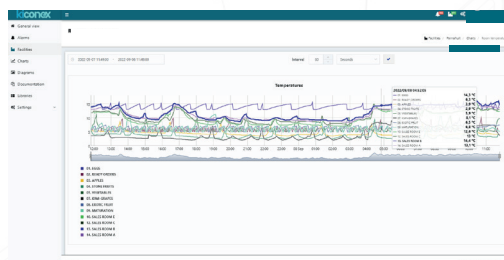


Chart results



Layout results



List of components

- **1 Unit** kiconex 32 PROFESSIONAL.
- **1 Unit** 400 x 400 mm electrical panel.
- **2 Units** kiconex cable.

FOOD INDUSTRY

kiconex connects your IoT platform to the cooling units of a food warehouse to **supervise** and **control** their operation remotely. With this information, the IoT platform can provide the user with a **data log** of the units, offering basic information, such as, for example, if the cold chain is uninterrupted, to more **advanced** information, such as possible breakdowns in units.



The platform can also **display** the installation in a layout with real temperature readings in each chamber and also **activate** or **deactivate** each one of them.

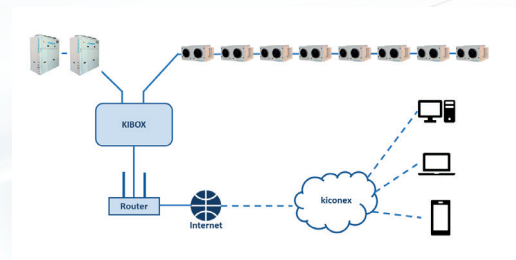
UNITS TO SUPERVISE

2 Air-condensing refrigeration stations with built-in hydraulic unit. It features a leakage detection and emergency fan system.

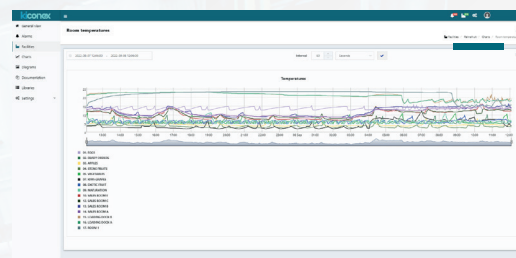
16 Chambers with compact refrigeration units.

PLATFORM

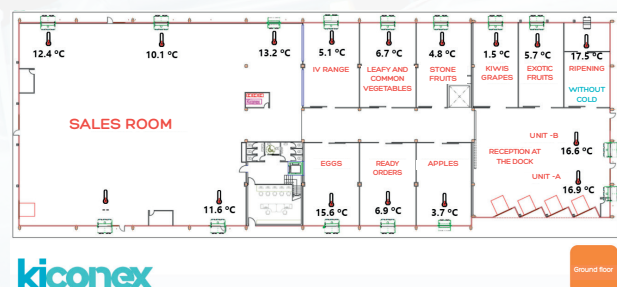
● Basic layout



● Chart results



● Layout results



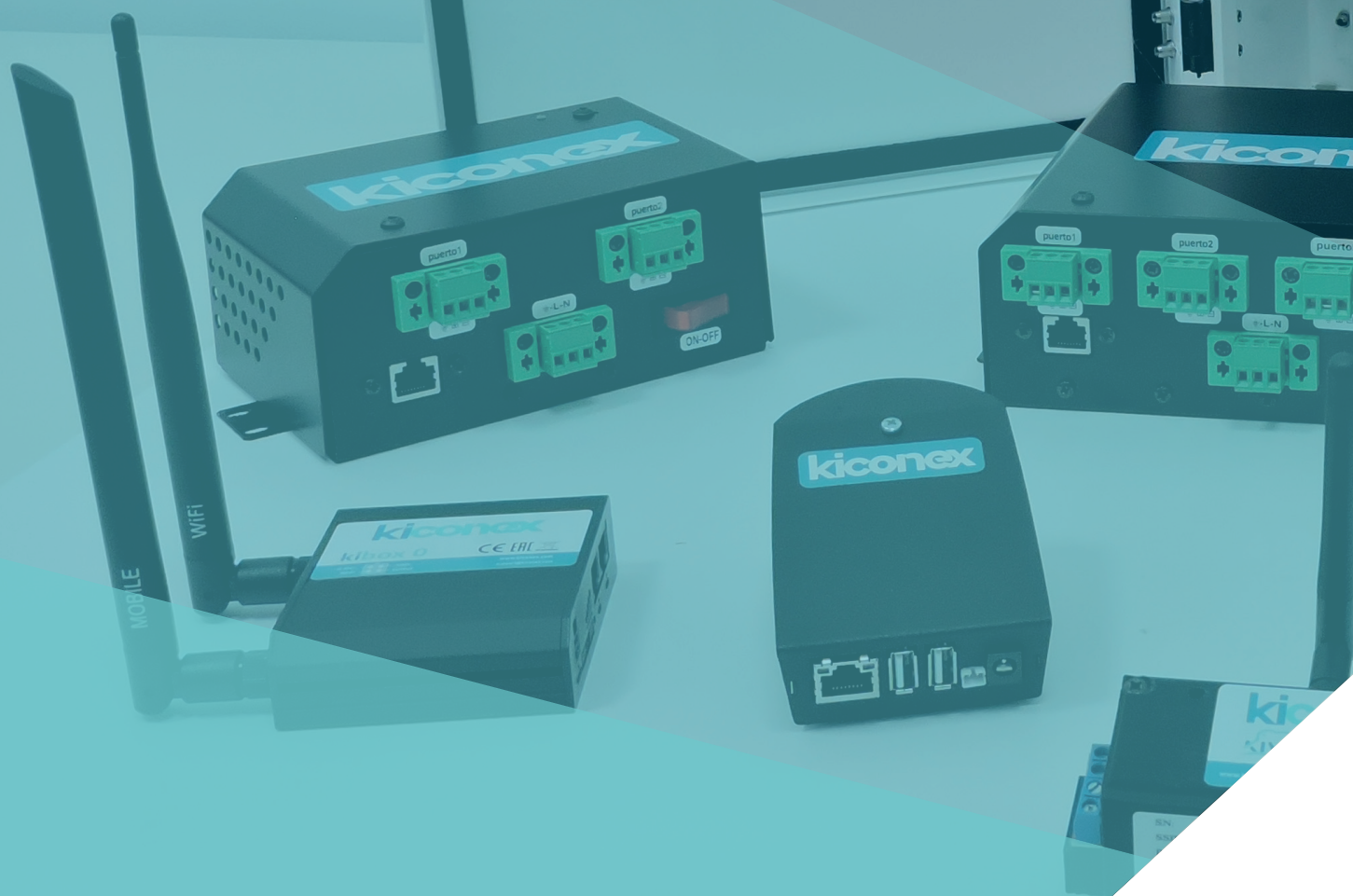
kiconex

Ground floor

List of components

- **1 Unit** kiconex 32 PROFESSIONAL.
- **1 Unit** 400 x 400 mm electrical panel.
- **2 Units** kiconex cable.

*A wide range
of state-
of-the-art
products with
IoT technologies*





PRODUCTS

A wide range of products, covering all unit and installation monitoring and control needs.

A wide range of solutions are offered with the **kiconex** hardware (kibox) and software.

At the hardware level, there are a series of products aimed at installation companies, with a Plug & Play configuration that make them unique in the market.

Our range of solutions also includes a series of devices that have been exclusively designed

for OEM customers and which include different connectivity features.

At the software level, our mykiconex platform is constantly being developed, offering a cutting-edge technological solution at all times. We offer three service plans to cater to all needs: BASIC, PROFESSIONAL and PREMIUM. Each service plan has its own special features. In addition, kiconex is offered with no additional fees, i.e., customers can enjoy all of its benefits after purchasing it, with no additional charges.

(Mykiconex PLATFORM)

PLANS FOR INSTALLATION COMPANIES

3 plans for each need.

	Kibox	Basic	Professional	Premium
Data log		3 months	1 year	3 years
No. Users/Groups		1	3	No limit
Configuration of units		●	●	●
Online update		●	●	●
Chart editing		●	●	●
Alarm display		●	●	●
Documentation display		●	●	●
Diagram editing			●	●
Alarm editing			●	●
Documentation editing			200 Mb	1 Gb
Extra library design			1 extra	5 extra
Rule editing				●

No. of devices		a/plan	a/plan	a/plan
kiconex 2 (1 to 2 devices)	Kibox 2	ki2BAS	ki2PRO	ki2PREM
kiconex 8 (3 to 8 devices)		ki8BAS	ki8PRO	ki8PREM
kiconex 16 (9 to 16 devices)		ki16BAS	ki16PRO	ki16PREM
kiconex 32 (17 to 32 devices)	Kibox 4	ki32BAS	ki32PRO	ki32PREM
kiconex 64 (33 to 64 devices)		ki64BAS	ki64PRO	ki64PREM
kiconex 96 (65 to 96 devices)		ki96BAS	ki96PRO	ki96PREM
kiconex 128 (97 to 128 devices)	Kibox 8	ki128BAS	ki128PRO	ki128PREM
kiconex 256 (129 to 256 devices)		ki256BAS	ki256PRO	ki256PREM

HARDWARE (KIBOX)

Products for INSTALLATION COMPANIES



Kibox 2

- 85 - 265 VAC - 50/60 Hz
- Plug & Play
- Backlit ON/OFF button
- Operation LED
- RJ45 connector Ethernet
- 2 Modbus RTU connections, used to connect 2 RS485 buses



Kibox 4

- 85 - 265 VAC - 50/60 Hz
- Plug & Play
- Backlit ON/OFF button
- Operation LED
- RJ45 connector Ethernet
- 4 Modbus RTU connections, used to connect 4 RS485 buses



Kibox 8

- 85 - 265 VAC - 50/60 Hz
- Plug & Play
- Backlit ON/OFF button
- Operation LED
- RJ45 connector Ethernet
- 8 Modbus RTU connections, used to connect 8 RS485 buses

Solutions for
installations



Products for INSTALLATION COMPANIES



KiWi

kiconex **Wireless**

Wi-Fi device that allows kibox (kiconex) to communicate with Modbus RTU* units (RS485). It acts as a gateway for the messages sent between Modbus TCP and Modbus RTU.

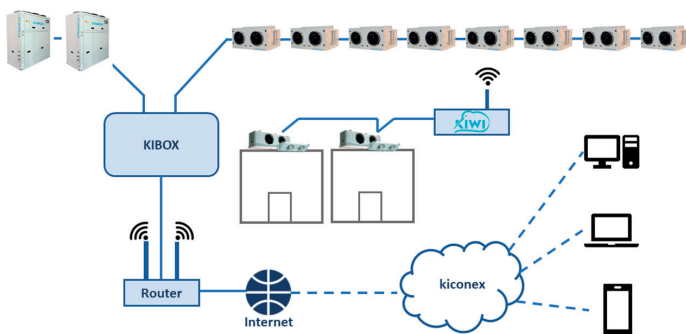
(*): TCP units throughout 2021.

KiWi features:

- 1 Ethernet port (alternative to Wi-Fi communications).
- 1 microUSB power supply port. (Includes 5V adapter).
- 1 RS485 port.
- Reset button.
- Wi-Fi communication antenna.
- Dimensions (LxWxH) / Weight: 98 x 54 x 40 mm / 70 g.

KiWi can connect to units that are not physically connected to any RS485 bus in a kiconex installation. This streamlines the installation process and allows kiconex to become a system that is easy to install in retrofit (restoration or remodelling work).

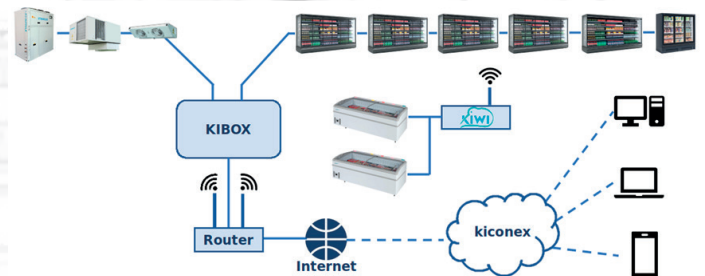
KiWi FOR INDUSTRIAL KITCHENS



Example of KiWi in an industrial kitchen in which different services are interconnected to the same bus and the two refrigeration chambers are far from each other, in another part of the premises, and are integrated to kiconex thanks to KiWi, via Wi-Fi and without the need to wire a bus to kibox.

KiWi for SUPERMARKETS

Real example of KiWi in a supermarket in which all perimeter display cabinets are connected to the same bus and the frozen product islands are integrated via KiWi, without having to wire them together.



RETROFIT
(Restoration work)

HARDWARE (ACCESSORIES)

Electrical panel

These are different electrical cabinets, manufactured with a 1.2 mm thick galvanised steel plate, painted in white, with a lock, and equipped with thermal-magnetic circuit breakers, Schuko socket base and connection terminals.

Different dimensions, according to their quantity and to the dimensions of the components to be stored inside.

- 350 x 300 electrical panel with 130 mm depth.
- 400 x 400 electrical panel with 150 mm depth.
- 400 x 600 electrical panel with 162 mm depth.

Shielded cable

100 m cable with a 2x1 mm² cross-section, shielded and halogen-free Z1C4Z1-K.

The acquisition and use of this type of halogen-free shielded cable in the installation will give an additional year of warranty for kiconex products.



kiCONTROL

This is a programmable module.

- Digital Inputs - (DI): "States".
- Digital Outputs - (DO): "Relays".
- Analogue Inputs - (AI): "Probes".
- Analogue Outputs - (AO): "0-10 V (proportional)".

The enclosure is made out of a galvanised steel plate cabinet with a 1.2 mm thickness, painted in white and with a lock. The standard option is offered with a monochrome digital display and button pad. The colour touchscreen is offered as an option.

This module is always supplied with its corresponding electrical panel, which is hosted on a DIN rail, featuring a 24 VDC (1.3 A) power supply, thermal-magnetic circuit breaker protection, Schuko socket base and connection terminals.



The following kiCONTROL models are available, according to the number of digital and analogue inputs and outputs:

	kiCONTROL 208	kiCONTROL 215	kiCONTROL 215+206	kiCONTROL 215+215	kiCONTROL 215+206+215
AI	6	10	17	20	27
DI	11	20	23	40	43
AO	4	6	9	12	15
DO	8	15	21	30	36

Fancoil thermostat

Digital thermostats in two versions: For fancoils/AHUs with 3-speed motor or EC motor.

Available with a button pad or touchscreen.

Modbus RS485 communications.

Thermostats for high, medium and low-temperature units.

Thermostats to control high, medium and low-temperature evaporators.

- Controls the fan, solenoid valve, demisters, evaporator temperature and chambers. Temperature setpoint assignment.
- Modbus RS485 communications.

NETWORK analysers

Cost-effective and compact energy meters for three-phase devices. With LCD data display. Designed to take active and reactive energy measurements and allocate costs. Direct connection version (up to 65 A) or with external transformers.



Probes and module

Wide range of contact, ambient or immersion probes. To measure air or liquid temperatures, pressures, humidity percentages, etc.

Probe module that assigns a logical address to each temperature probe. Modbus RS485 communications.

Router

GSM router (3G/4G) with antenna for improved coverage. Optional magnetised antenna for outdoor installation. Wi-Fi connection to connect to the installation's Wi-Fi network or with Internet Wi-Fi if it uses a SIM card (M2M).

M2M cards

Data cards to connect our routers or the OEM's kibox units. We offer different connection rates, according to the volume of data and the installation's region.

Other accessories (Internet switch, Internet ranger, OEM supports and OEM transformers).

Please contact us for further information about other accessories.

(Mykiconex platform)

PLANS FOR OEMs

These are AD-HOC plans, so each OEM customer will have their own plan, according to their needs.




The following
can be
personalised:



Data log time.



No. of users per installation.



Platform (branding).

"kiconex offers OEM customers an ultra-modern service, in line with the latest technologies that are currently available to everyone and that we provide for our customers."

PRODUCT

Products for OEM customers



Kibox 0

kiconex gateway, with RJ45 port to connect units via the Modbus TCP/IP protocol. It is supplied with a magnetised antenna to improve the coverage, with our Connectivity Rate.



Kibox 1A

kiconex gateway, with RS485 port to connect units via the Modbus RTU protocol. It is supplied with a magnetised antenna to improve the coverage, with our Connectivity Rate.



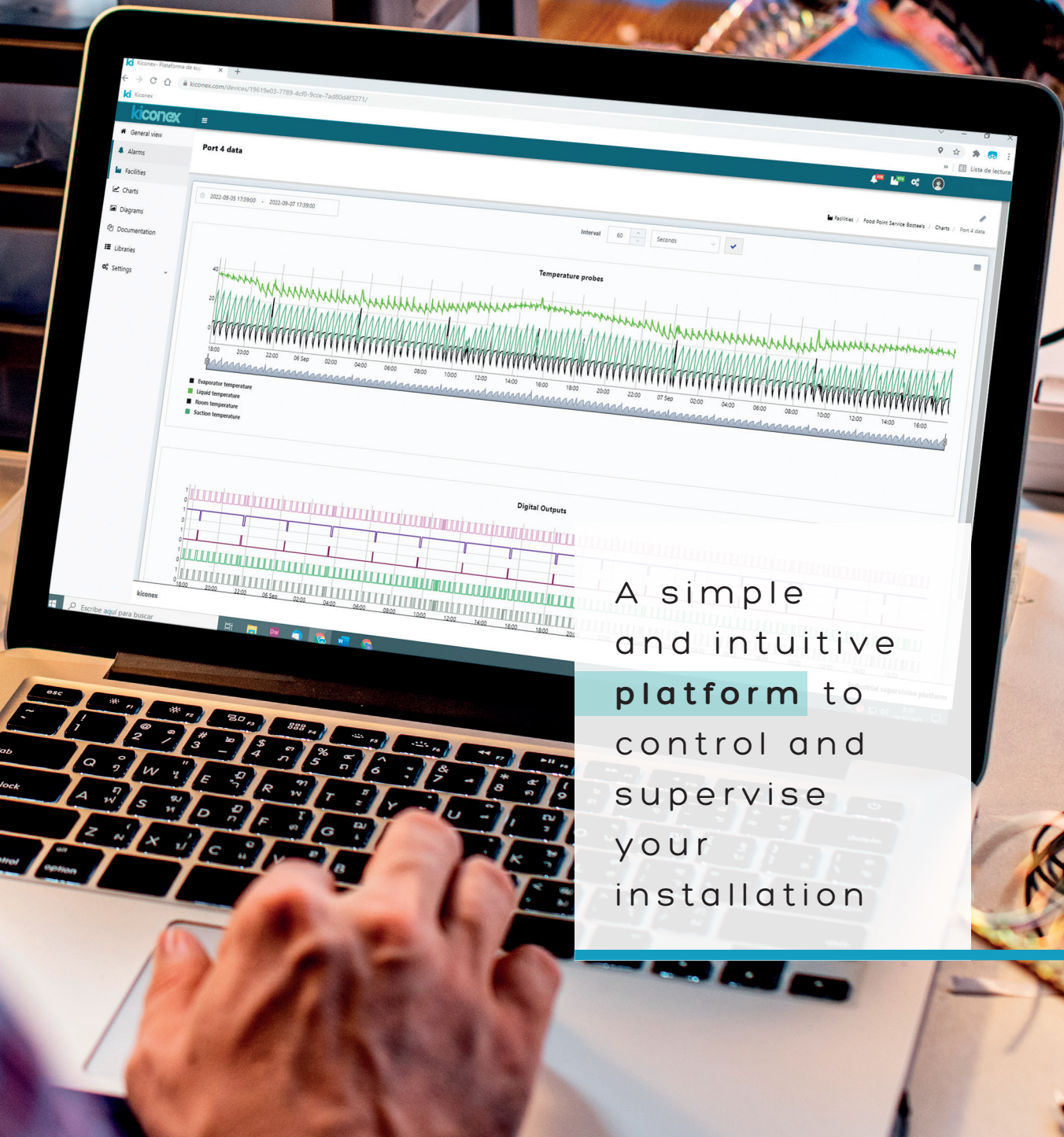
Kibox 1B

kiconex gateway with two RS485 ports to connect two devices via the Modbus RTU protocol and an RJ45 port to connect the router. It is supplied with the corresponding power supply.



Kibox 2A

kiconex gateway with two holders for SIM cards (M2M). Featuring 1 RS485 port and 1 RS232 port to connect units via the Modbus RTU protocol and 4 RJ45 ports to connect units via the Modbus TCP/IP protocol. It is supplied with a magnetised antenna to improve the coverage, with our Connectivity Rate.



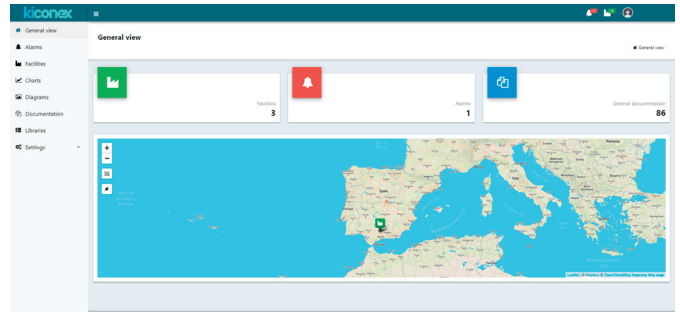
A simple
and intuitive
platform to
control and
supervise
your
installation

PLATFORM



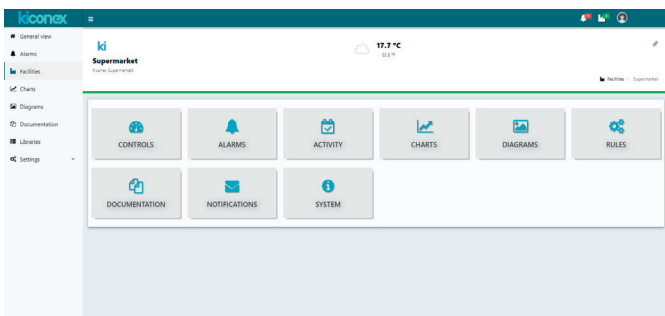
Users, roles and access levels

You can access the installations in your profile by entering your username and password. The email address or telephone number to receive alarm notifications, change the language, etc. will be stored in the user's profile.



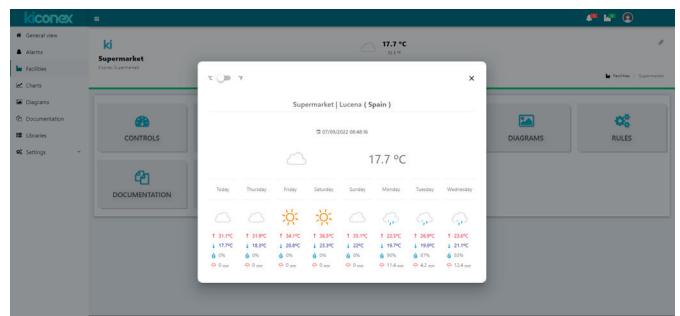
Main dashboard - Geolocation

This is a summarised view of the geographical location of your connected and disconnected installations.



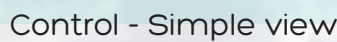
Installation view

It can be used as the main menu to access all of the options for the selected installation.



Installation view

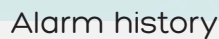
It shows the current weather information for your installation's location. It also shows a weather forecast for the next 7 days.



It also shows the relay status.



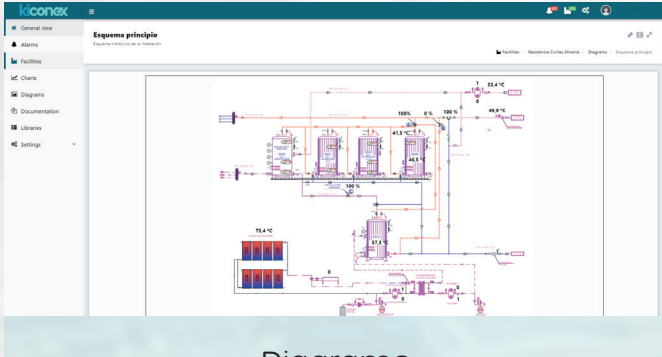
As in the case of the simple view, the corresponding chart will be displayed if you scroll over any parameter. Likewise, you can add the curves of other digital (relays) or analogue variables (probes, etc.)



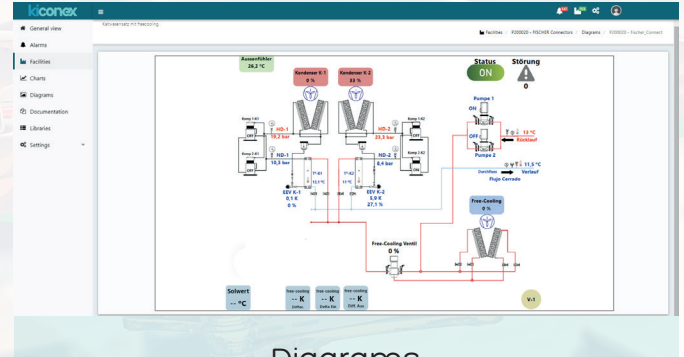
The alarms in each installation and their criticality can be viewed at a glance. This information will show the time when the alarm was triggered and its duration.



Each control (device) in an installation can be monitored to check its alarms and the corresponding criticality levels, start time and duration.



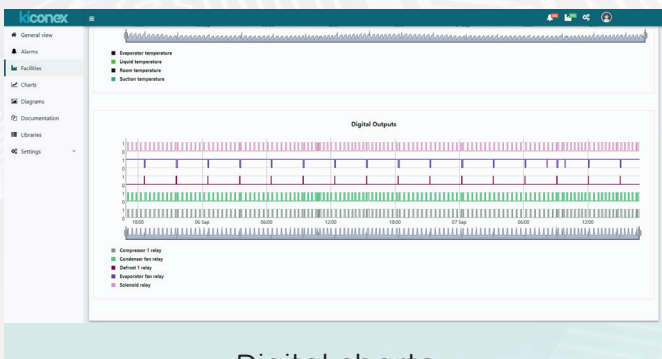
Diagrams



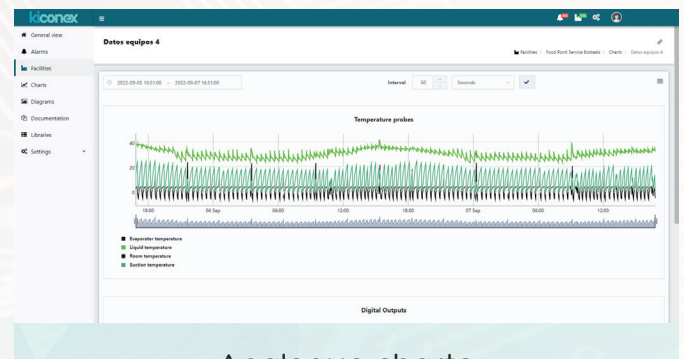
Diagrams

kiconex can draw the layout of any installation, so you can see the operation of your units in real time and in a very intuitive way. In addition, kiconex allows you to perform a series of actions on these units.

At any time, the user can implement a machine layout and locate the different parameters used to regulate its electronic systems, as well as perform specific actions and change specific setpoints. This will create an advanced dashboard that controls units and installations in real time.



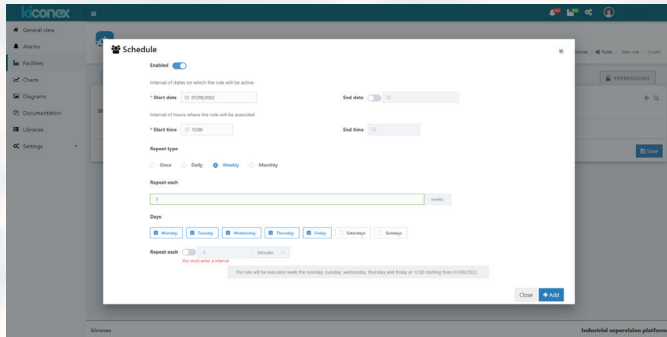
Digital charts



Analogue charts

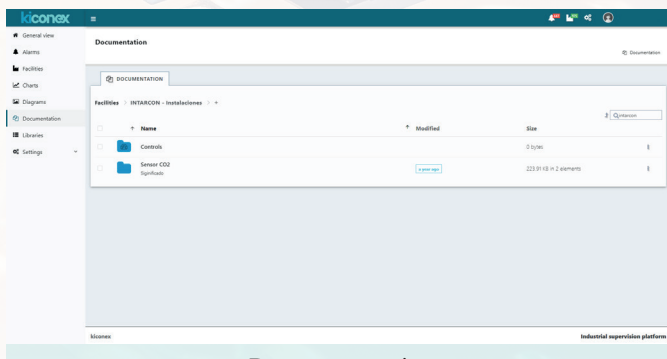
kiconex can create charts for the different digital variables (states, relays, etc.) of a unit. These curve charts can be converted into tables and exported to .csv files.

kiconex can also create charts for the different analogue variables (temperature, pressure, consumption, etc.) of a unit. These curve charts can be converted into tables and exported to .csv files.



Rules - Time scheduler

The time programming feature is commonly used by kiconex's PREMIUM systems. Many of our customers' installations need and make use of this feature.



Documents

All of the important documents you create can be uploaded to the cloud. You can upload different types of documents, such as wiring diagrams, user or installation manuals, work reports by refrigeration technicians or videos with the necessary information.

This image shows a single sheet of white paper with horizontal ruling lines. The lines are evenly spaced and run across the width of the page. There are no margins, text, or other markings on the paper.

Terms and conditions of sale

Unless there is express consent from the seller, the following sales conditions shall apply:

Prices

The prices provided by kiconex in its Price Lists are not binding and will cancel any previous fees or prices listed. kiconex reserves the right to change the prices and features of its products with no prior notice. Prices are shown in euros (€).

Installation

kiconex does not install the products it sells. However, kiconex offers a commissioning service for the systems it manufactures and sells. The customer will be charged for this service. The commissioning service will be carried out online by kiconex's Support department.

Moreover, the buyer undertakes to comply with the applicable legislation and guarantee the quality of the installation, which in all cases must be performed by an installation company authorised according to the applicable regulations.

Orders

Orders are requested in writing and shall be confirmed by the seller via an order acknowledgement indicating the manufacturing release date, reserving the right to withdraw. Once manufacturing commences, the order may not be cancelled.

Please return all order acknowledgments of receipt signed and stamped in order to track each order properly. Failure to report problems associated with the confirmation of the order and/or its full or partial cancellation in writing will imply the acceptance of the order confirmation terms and conditions.

Packaging

The prices include standard packaging for road transport, not suitable for sea transport.

Delivery

The orders are sent via ordinary shipping with product delivery in mainland Spain or a mainland port in a location accessible by lorry, during the working day. Complaints regarding the delivery will only be accepted if provided in writing in the corresponding delivery note and sent within 24 hours.

Returns

No material returns are allowed unless there is express consent from the seller, and in all cases a percentage of no less than 10% of the sales price will be deducted for processing fees.

Specifications

The data and characteristics contained in this catalogue are provided as an indication, subject to change without notice and must be confirmed in the event of an order.

Warranty

The manufacturer guarantees that all products supplied are free from manufacturing defects or problems for a period of 12 months from the date of delivery. This warranty can be extended by an additional 12 months if the kiconex cable is used.

Failure to observe the current regulations for installations (electro-technical and low-voltage regulations, as well as any other regulations associated with air-conditioning, heating, safety, plumbing and other installations) will void the warranty.

Method of payment

Unless there is an agreement on the form of payment, the invoices shall be paid upfront. The seller reserves the right to withhold the delivery of pending orders if there are circumstances of risk regarding pending payments.

Conflict resolution

The sales contract for kiconex products is governed by Spanish law. Any conflict or disagreement will be subject to legal arbitration of the Chamber of Commerce of Córdoba. If there is a disagreement, the parties expressly waive any jurisdiction that could correspond to them and will be subject to the jurisdiction of the courts of Lucena (Córdoba).

An abstract network diagram consisting of numerous small, semi-transparent nodes connected by thin, light gray lines. The nodes are scattered across the page, with a higher concentration in the top and bottom corners. The nodes are colored in various shades: red, green, blue, orange, yellow, pink, purple, and gray. The lines form a complex web of connections between the nodes, creating a sense of a global or interconnected network.

kiconex

www.kiconex.com